

Dramatic enhancement of superconductivity in single-crystalline nanowire arrays of Sn

Ying Zhang¹, Chi Ho Wong^{2,4}, Junying Shen², Sin Ting Sze², Bing Zhang², Haijing Zhang², Yan Dong¹, Hui Xu¹, Zifeng Yan¹, Yingying Li³, Xijun Hu³ and Rolf Lortz²

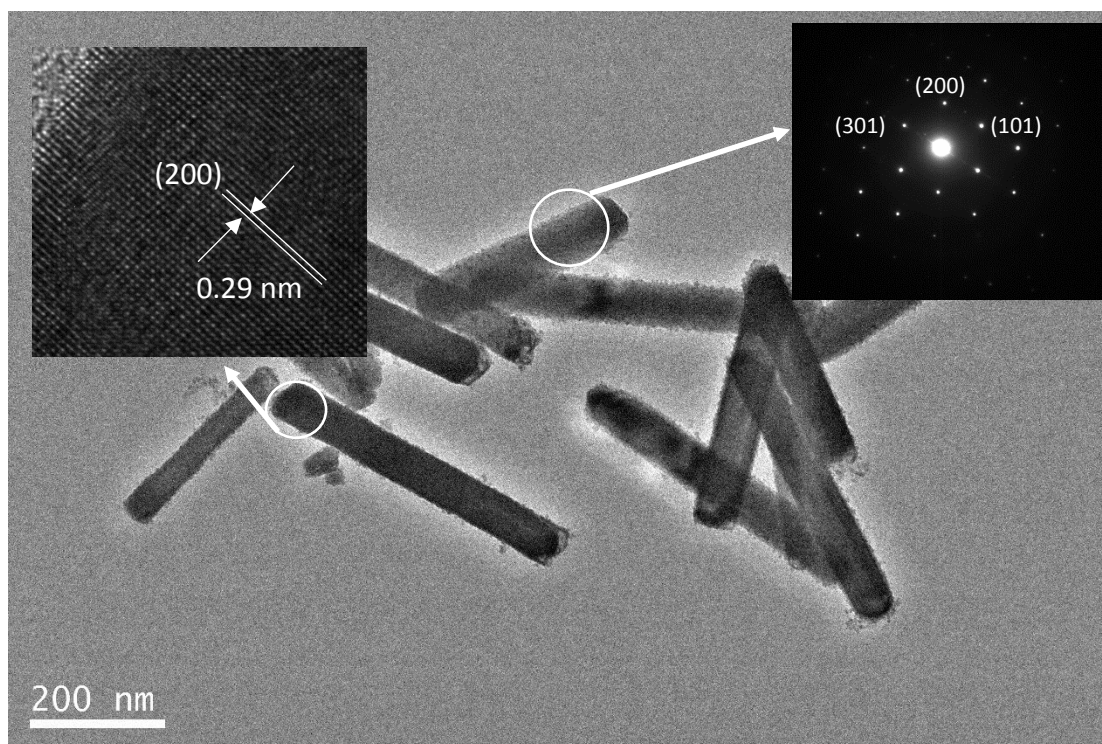
¹ State Key Laboratory for Heavy Oil Processing, PetroChina Key Laboratory of Catalysis, China University of Petroleum, Qingdao 266580, China

² Department of Physics, Hong Kong University of Science and Technology, Clear Water Bay, Kowloon, Hong Kong

³ Department of Chemical and Biomolecular Engineering, Hong Kong University of Science and Technology, Clear Water Bay, Kowloon, Hong Kong

⁴ Institute of Physics and Technology, Ural Federal University, Russia

Supplementary Figures



Supplementary Figure 1 | TEM image of a single Sn nanowire. The insets demonstrate the well-defined single crystalline structure of the nanowire in form of the corresponding SAED pattern and HRTEM images of the marked region