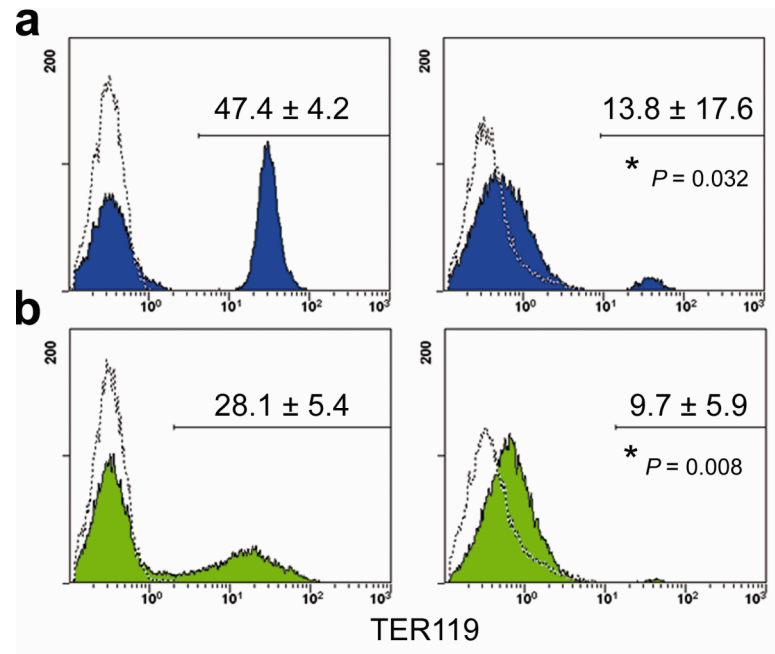


Supplementary Figure 3



Supplementary Figure 3. Decreased erythroid cells in *Nor-I*^{-/-}*Nur77*^{-/-} mice. Flow cytometric analysis of bone marrow cells from *Nor-I*^{-/-}*Nur77*^{-/-} mice (right) compared to *Nor-I*^{+/+}/*Nur77*^{+/+} mice (left), either untreated (a) or treated (b) with ammonium chloride at 37°C for 5 minutes. The erythroid population was identified with FITC-conjugated anti-TER119 antibody. Region labeled represents gating for TER119⁺ cells, and values represent percentages of TER119⁺ cells. Dotted lines indicate the background staining using isotype controls. Data are expressed as means ± s.d. for 3 mice per group.