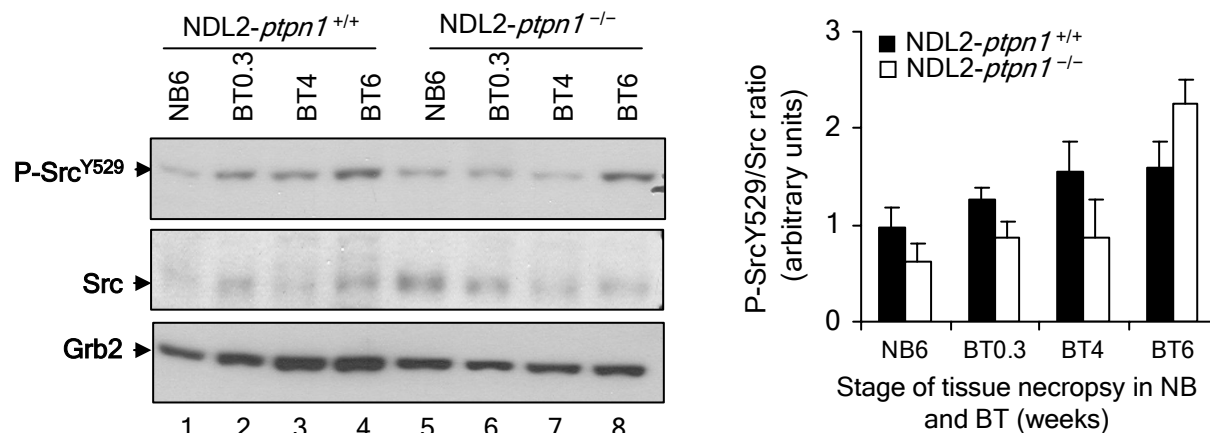


## Supplementary Figure 2



### Supplementary Figure 2. Unaltered Src phosphorylation during mammary tumor progression in ND2-*ptpn1* null mice

Total breast tumor tissue (BT) lysates from ND2-*ptpn1*<sup>+/+</sup> and ND2-*ptpn1*<sup>-/-</sup> transgenic mice at week 0.3 (BT0.3), 4 (BT4) and 6 (BT6) after tumor occurrence were separated by SDS-PAGE and transferred to PVDF membrane. Normal mammary tissue adjacent to the tumor at week 6 after tumor onset (normal breast, NB6) was used as a control (lanes 1 and 5). The membrane was probed with anti-phosphoY529 Src (P-Src<sup>Y529</sup>) antibodies and reblotted with anti-Src antibodies. Grb2 immunoblot is used as a loading control. The experiment was repeated three times using three different animals at each time point. The diagram illustrates the densitometry analysis of the phosphorylated Y529 residue of Src. Error bars represent standard deviation.