

Supplementary Tables

Vp (km/s)	Top of Layer (km)
5.9	0
6.5	14
6.8	27
8.0	37

Table S1. P-wave velocities as a function of depth used for computing earthquake locations.

Dates (yyyymmdd)	Orbit numbers	Separation (days)	Track	Look angle (°)	Baseline (m)	Ambiguity altitude (m)
20070403- 20070717	26613- 28116	105	6	41	145	101
20070717- 20070821	28116- 28617	35	6	41	42	350

Table S2. Parameters from the two interferograms used here.

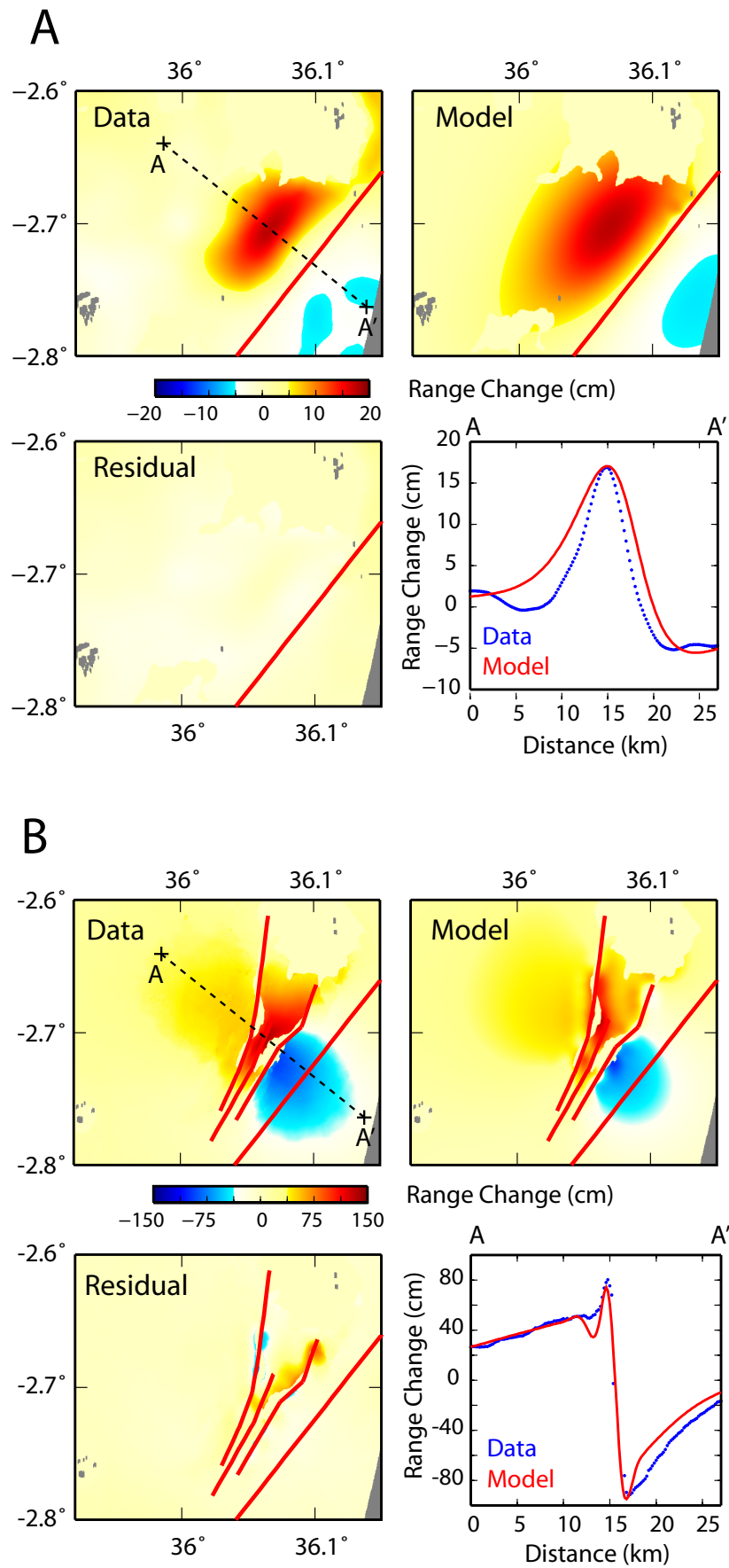


Figure S1. Comparison of unwrapped interferograms (panel "Data"), simulated interferograms using the best-fit model parameters (panel "Model"), and residual (data minus model, panel "Residuals"). Fourth panel shows data and model range change along profile A-A' (indicated on panel "Data"). A: April 7 - July 17 interferogram, B: July 17 - August 21 interferogram