

Supplementary information

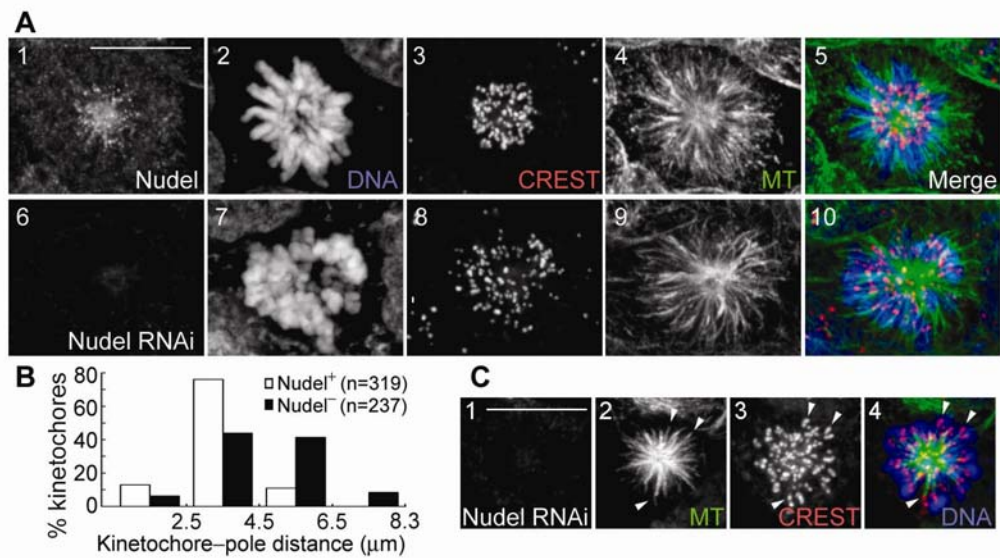


Figure S1 Nudel depletion results in chromosome dispersion on monoastrial spindles. (A) Typical chromosome positioning on monoasters. HEK293T cells transfected with pTER (panels 1-5) or pTER-Nudi (panels 6-10) were treated with monastrol for 4 hours to induce monoasters, followed by processing for immunostaining. (B) Percentage of kinetochores with kinetochore-pole distances in the indicated ranges. (C) Cells treated as in (A) were incubated with 0.1 mM CaCl_2 for 90 seconds to destabilize non-kinetochore MTs prior to fixation. Arrowheads indicate representative monooriented kinetochores. Scale bars, 10 μm .